

ALPINESPORT



SNOWCRAFT COURSE AUGUST 2023
Amy Mipoe, Jane Preston and Carol Christie (Instructor) in action.

CONTENTS

Club Contacts	Page 3,4
President's Report	Page 5-6
Welcome New Members	Page 6
Notices & News	Page 7
Summer Camp 2023/2024	Page 8
News from RAL	Pages 11-12
Obituaries	Page 13-14
DOC Information re the Kaimai's closure	Page 15-18
Trip Reports	Page 19-22
Upcoming Trips	Pages 23-26

COMMITTEE & CLUB CONTACTS

COMMITTEE	NAME	PHONE NUMBER	EMAIL ADDRESS
President	Miranda Hutton	022 6488 733	president@alpinesport.org.nz
Vice President 1	Maria Bullock	021 0544 227	maria@alpinesport.org.nz
Vice President 2	Johann Schoonees	021 0245 2147	johann@alpinesport.org.nz
Secretary	Jenny Hudson	021 626 330	secretary@alpinesport.org.nz
Treasurer	Jackie Ponting	021 209 3120	treasurer@alpinesport.org.nz
Membership Secretary	Jeanette Davidson	021 432 191	membership@alpinesport.org.nz
Tours Officer	Greg Munford	021 166 6726	tours@alpinesport.org.nz
Ruapehu Buildings Officer	Nicholas Roberts	021 0235 5065	ruapehu@alpinesport.org.nz
Ruapehu Operations Officer	Lloyd Lin	021 0221 3112	ruapehu@alpinesport.org.nz
Events Coordinators	Keri & Eric Horn	021 914 173	kerianderic@alpinesport.org.nz
Waitakere Hut Liaison	Mike Frith	021 0272 8662	mike@alpinesport.org.nz

CLUB APPOINTMENTS

	NAME	PHONE NUMBER	EMAIL ADDRESS
Fundraising Officer	Jane Adams	021 571 300	jane@alpinesport.org.nz
Website & Database	Clive Bolt	09 534 2946	clive@alpinesport.org.nz
Waitakere Hut Bookings	Joe Scott-Woods	022 385 2100	pjscottwoods@icloud.co.nz
Waitakere Hut Officer	Paul Lyon	027 421 8100	Pylon.plm@gmail.com
Waitakere Regional Park Liaison	John Mackay	09 303 2774	john@alpinesport.org.nz
Alpinesport Editor	Fiona Heenan	021 633 834	media@alpinesport.org.nz
Social Media Coordinator	Jeanine Scholey	022 500 8902	janscholey@gmail.com
FMC magazine distributor & advisor	Warren Whyte	027 675 2147	wandjwhyte@xtra.co.nz
Club evening key holder	Maria Bullock	021 0544 227	maria@alpinesport.org.nz
Club Gear for hire (PLBs)	Murray Davidson	09 528 4504	ddjhmjnz@gmail.com
Club Gear for hire (climbing & snowcraft)	Brian Duffy	09 528 3782	bwd742@gmail.com
Thursday Walks Coordinator	Clive Bolt	09 534 2946	thursday.walks@alpinesport.org.nz
Midis & Midis plus coordinator	Sherilyn Coney	0274 360 680	sconey@xtra.co.nz
Summer Camp Coordinators	Mark Roberts	021 083 36285	mark@alpinesport.org.nz
	Miranda Hutton	022 6488 733	president@alpinesport.org.nz
Club Records Archivist	Jenny Hudson	021 626 330	email@alpinesport.org.nz
Ruapehu Bookings	Justine Checketts	027 240 4628	bookings@alpinesport.org.nz
Ruapehu Hut Warden Alpinesport September 2023	Gemma Seddon	273618052	aframe@alpinesport.org.nz
Ruapehu A Frame phone		07 892 3710	

PRESIDENT'S REPORT

25th August 2023



Kia ora koutou,

The kowhai are flowering and spring is around the corner. The ski season at Ruapehu is going well and I'd encourage anyone who hasn't been down yet to grab the chance.

Almost all runs are currently open, which is an impressive feat considering the staffing numbers and precarious start to the season. There is plenty of snow and we have a wonderful hut warden, Gemma Seddon, looking after the huts, so take a drive and enjoy the magic of the mountain.

Club activities continued apace this month with Thursday Walks, Sunday Walks, a weekend Women's Overnighter at the Waitakere Hut, and the Snowcraft course taking place this weekend. Do remember that everyone in the club can lead a trip, so if you have an idea of a nice trip you'd like to do, put up your hand and contact our Tours Officer Greg Munford tours@alpinesport.org.nz

Save the date - mark Sunday 29th October in your diaries for our long-awaited Woodburner Celebration at the Waitākere Hut. Come along for a delicious shared lunch, endless cups of tea and the official cutting-of-the-ribbon and unveiling of the new wood burner stove, generously purchased from the donations of our members and installed with major input from our dedicated Waitākere Hut team.

Exciting news - the site of the Summer Camp is confirmed! With the help of our long-time club member Martin Nelson we have secured a gorgeous spot just north of Te Aroha on the edge of the Kaimai Ranges. See advertisement later in the magazine for more details.

Two more dates to remember are the upcoming Club Nights, held on the first Tuesday of each month. In September we have three young students from Glendowie College coming to present their website designs (based on the ASC website) and afterwards we will hear tales from Jeanette and Murray Davidson's recent trip to Europe.

In October we have a special guest, Alexander Hilary, grandson of Sir Edmund Hilary flying up from Te Anau (thank you to Bruce Arroll for gifting his flight) to share stories of his grandfather and his own impressive climbs in the Himalayas and NZ.

Alex Hilary has a strong connection with the club, his great grandfather Jim Rose being one of the very first members of ASC and his grandfather Sir Edmund also being associated with the club, including formally opening our A-Frame extension on Mt Ruapehu.

Within the committee, our main focus has been on choosing which insurance company to insure our three huts with and what level of insurance to take. Jenny Hudson has undertaken a huge amount of research and correspondence and found us an excellent deal with a new insurer. Thank you Jenny for your hard work on this.

Keep an eye out for wonderful trips later in the magazine, including our popular Children's Bushcraft weekend with Sue Grant and Clive Bolt.

Looking forward to seeing everyone soon,

Ngā mihi,

Miranda Hutton

Welcome to our New Members

- **Amy Mipoe**
- **Marion Browne**
- **Simon Cho**
- **Moraq and Paul Hadfield**

Please keep an eye out for these new members on trips and introduce yourself to them. Welcome Amy, Marion, Simon, Moraq and Paul. We hope you will have many years of outdoor adventures with the club.

NOTICES & NEWS

September Club Night

Tuesday September 5th

Glendowie College Students project.

See information below about Paul Lyon's work with these three students. Tonight they will be having a presentation and a Q & A session as part of their assignment.

This will be followed by:

Coastal walks around England Wales and Ireland

Murray and Jeanette Davidson will talk about their recent exploration of some sections of these walks including Mt Snowdon.

October Club Night

Tuesday October 3rd

Alexander Hillary (grandson of Sir Ed) and CEO/General manager of The Himalayan Trust.

As Ed's grandson, Alexander is carrying on his grandfather's legacy whilst spearheading the Trust's growth. He brings a passionate, dynamic approach to the Trust's fundraising activities and operations. Alongside the Board and the Operations Team, Alexander is pursuing a vision of a lean, highly effective non-profit where every dollar really does make a difference in Nepal. He will be speaking about the work of the trust and his own climbing achievements.

3 Scholarship Boys.

Over the years at Glendowie College, I have been asked to come up with Scholarship projects. This year the request was Digital Scholarship. Having been on your committee and noted issues that have in the past arisen with the website, what a project it would be to develop a new ASC website.

For Scholarship, it is not the finished website that's important but the processes of developing a formalised logical consistent approach. I have arranged a Mentor with a web development Company to assist the boys.

The boys are given tasks to perform weekly, with Zoom meetings held to develop the next page or task. At our Club Meeting on 05 September, the boys would like to present their initial presentation and will be looking to have a Q&A session from you.

To fit in with their exams the final presentation is planned for club night 05 September.

Note: it may not be complete, but the developmental steps are the important requirements. Good luck to our Scholarship Boys.

Paul Lyon.



BREAKING NEWS

ASC SUMMER CAMP VENUE FOR 2023 IS REVEALED

Sources confirm its a field with a stream and dams may even be built by small children!

LIVE

18:02 CET

Summer Camp 2023

26th December 2023 – 3rd January 2024

Come and join in the tradition! This year's camp is only a 2-hour drive from Auckland, nestled against the western side of the Kaimais, just north of the charming village of Te Aroha. The campsite itself is isolated and a charming mountain stream comes chattering off the pristine hills past our campsite. Bordered by native bush, the stream will be a highlight for dam building and water play for children of all ages. For a proper water-hole experience we will need to swim in the public pools at Te Aroha or drive to the gorgeous Waitawheta, only 30 minutes away. There is plenty to do in the area: we have permission to wander the farmer's property which borders the Kaimai Mamaku Conservation Park, there are lots of fascinating tracks nearby, mining history, mountain biking opportunities and kayaking. Paeroa is a 20 minute drive away, the Karangahake Gorge 25 minutes, and Waihi Beach is a 45 minute drive away.

A range of trips and activities are offered every day. Highlights include Summer Camp traditions such as the children's sing-song, New Year's Eve talent show and New Year's Day games (including three legged race, egg and spoon, running, cycling and tug of war). Summer Camp is a highlight of the calendar. You will need to be a current ASC member to reserve a spot, though friends and relations can attend as your guests.

Cost: TBC. A deposit of two nights' will be due to secure a spot.

To book a spot and for more information including the exact address contact Peter Jemmett:
pmc.jemmett@xtra.co.nz



Our Summer Camp Venue for 2023



Name these peaks please,

Last month Janet Romanes shared with us a piece of writing which she had done as part of her writing group (Ed's Scribblers) at Sir Edmund Hillary Retirement Village. The task was to write about your favourite painting. I asked Janet if she could send us a photo of the artwork, as no doubt having read her description, we each conjured up our own individual ideas of what it might look like.

Janet sent the following photo of the painting but advises that it does not have a title, nor an artists signature. The scene is a view across Lake Te Anau. It was purchased at The Garage Gallery, 785 Fairlie-Tekapo Rd, Kimbell.

Can any members assist in naming these mountains for us?

Answers to fionaheenan@yahoo.com and I will publish next month.



THE FOLLOWING IS THE LATEST COMMUNICATION FROM TRAVIS DONOGHUE - CHIEF OPERATING OFFICER AT **RAL** RECEIVED ON AUGUST 25TH

“Kia ora,

As I write, we are looking ahead to another magic weekend on Mt Ruapehu, and we are not quite half way through the season.

Further down I list out some ideas and updates I wanted to share on how to help yourself and in turn help us make the most of the rest of the season. I also wanted to quickly remind you of our ‘Long Weekend’ 3 and 4 day pass sale which comes to a close on Sunday. You can save up to 40% on these passes available on our website.

Our crew continues to work really hard and I know they are really proud of the show they are putting on for you. There are still a couple of little pebbles in our shoe and we are working hard to shake these out as we head into the second half of the season.

Before you come up, buy online and avoid queuing at Guest Services. There really shouldn’t be anything you can’t do online at home over your bowl of Weet-Bix in the morning. If you have visited Mt Ruapehu before and have a snowcard from your previous visit, you can reload that card with new purchases. The card number will appear at checkout.

If you no longer have that card, then you can add a new card to your cart, and collect that from our click and collect machines on mountain.

On both the Bruce and Ohakune Mountain Roads, please obey signage and directions of the road crew. The road conditions and any restrictions can be found on our website. These can change for better or for worse a number of times over the day so please regularly check the website to keep informed, and be mindful and respectful of our crew as they manage the moving feast. Not all cars that look like SUVs have the mettle for this mountain, and remember that there is no chain hire on the access roads, so please give yourself and your car a good reality check before you choose to travel.

At Whakapapa, we have been aiming to get you all lifts, seven days a week. As we’ve chipped away hiring more lift operators we have had to sacrifice the Rangatira Chair on some weekdays, we were very close to being on top of this but this week we’ve seen a spate of staff illness which has set us back, but we should climb out of this soon.

At Tūroa, we have had a few tough exits from storm cycles and lifts have sometimes been opening later than we would like. All of that snowfall has meant a lot of time spent on digging and de-icing. We have also had a few niggly mechanical issues exasperating things. We should, however, see more “push button” starts as we head into spring, much like yesterday where we had all lifts by 9am.

We will continue to experience the odd mechanical gremlin, in a large part due to the age of our lifts. While this is a little bit of a ‘please bear with us’, there is light at the end of the tunnel...

Continued....

The Movenpick and Parklane have been your worthy servants for decades, putting in a remarkable shift. In good news, we can now share that both lifts will receive essential electro-mechanical upgrades this summer 2023/24. Through MBIE, PwC (the Liquidators) has been able to commit to this work which will add a considerable amount of reliability back into the base area lifts at Tūroa for 2024 onwards.

Back to the beginning – things are looking GREAT out there and we are really enjoying winter 23. If you've been holding back, tomorrow is a great time to spring into action.

Ngā manaakitanga

Travis

Electric Vehicle Charging no longer available at Whakapapa.

We have been advised that the two chargers located at the top of The Bruce were removed about two weeks ago. If you are the owner of an electric vehicle, please be advised that there is no longer a charging facility on the mountain.

Source: RMCA





ROY HAYWOOD

1939 - 2023

Roy started his professional career as a pharmacist. However, his lifelong quest for new knowledge and challenges led him to later train as a doctor, and in this capacity he served in Papatoetoe as a GP for most of his professional life.

Roy gained experience and knowledge of back country routes and huts through many private trips, some including ASC members. In the 1990's, he used those experiences in planning a series of extended ASC summer trips.

It was Roy's energy, curiosity, zest for life and sense of humour that contributed to making those trips so memorable for many ASC trampers of that era. From memory, they started in the Ruahines in 1994, and continued through the 90's with a number based in Nelson Lakes, North West Nelson Forest Park (now Kahurangi National Park) and routes and passes north of Lewis Pass.

No challenge was deemed too great for our groups with their varying abilities. Despite routes using cableways and three wire bridges, we always made it through safely, with lots of stories to tell on our return. I have memories of scaling vertical cliffs, wading down ferocious streams, and clinging to tree roots and branches, with much vertical height both above and below, as we made our way through some overgrown and unmaintained routes.

Roy's optimism and positivity kept our spirits up, and our legs moving. One of his memorable sayings was, 'It's just around the corner and along the grassy flat.....' Yeah right! And as we got more weary and battle stained, he fantasised about the fluffy white towels awaiting us at our planned exit accommodation.

Roy was also a keen amateur movie maker, and the video camera was always swinging around his neck, even in the most inhospitable and challenging conditions. Miraculously it never succumbed to the elements, and the movies of the trips were enjoyed by all on our return home. In later years these ambitious adventures gave way to more local ASC weekend trips and then regular outings with the Thursday Walking Group.

We will miss his infectious optimism, sense of humour and zest for life.

Pat La Roche and Lesley Hawke

When sourcing a copy of Roys photo to add to this obituary, I had the following correspondence from Roy's daughter Raewyn Khosla which further illustrates Roy's zest for good long days in the hills.....

"How lovely that Dad will have an obituary in your magazine. That just seems so fitting. He was a devoted tramper and my childhood is full of memories of his over ambitious tramping plans for his kids! On one occasion we staged a mutiny and demanded a rest day as our legs simply couldn't keep going".



JEAN DRAFFIN

1933 - 2023

Long-time club member Jean Draffin died recently.

Jean joined ASC about 70 years ago when she married club member and one time President Rod Draffin and from then on was always there “doing her bit” for the club.

She was born in Waihi and spent many years teaching at Corran School in Remuera.

Looking back, Jean was never far from club activities and became a Life Member in 2002.

In the 60's when the club was smaller and many members were of the marriageable age she organised engagement parties held at club members homes and always gave them a significant present.

I heard that one couple are still using a bread knife they received at their engagement party.

Jean wearing equipment to use on Scruffy Turner's rope tow on the National Downhill.
We hardly lot used to walk up there every morning.

When Progressive Dinner parties were used for fund raising, the main course was usually held in the Draffins large villa in Ridings Road. And so were very many other club functions over the years.

The Draffins had a racing A class keeler, Defiant, which was crewed by ASC members and as a committee member of Friends of the Auckland Philharmonic Orchestra, Jean organised ASC guys to serve behind the bar at the fund raising garden parties held annually at Government House for many years. She was also a founding member of the Kaueranga Book Club started over twenty years ago after a Midi weekend in the Kaueranga Gorge. There are still many ASC members in the club which is still going today.

Jean was Editor of Alpinesport in the 70's and she and husband Rod, were involved with many work parties and fund raisers to build the A Frame and to upgrade the Old Hut. She walked with the Thursday Walkers and the Retreads, another walking group, mainly of older club members. But probably most importantly she ran monthly meetings in member's homes for the Veterans section of the club for many many years and was very supportive and caring of the members particularly as they aged and became infirm.

When the Veterans group became too small she amalgamated the group with the Midis, and continued organising monthly functions until she was well over eighty.

Very musical, Jean sang in the St Marks choir and raised a family of professional musicians. Her funeral was like a concert with her children and grandchildren playing beautiful music.

Jean was a sociable person, with a quirky sense of humour, always interested in others and very involved with club activities. She was always a delight to be with. Laughter was never far away. Her work with the club was a wonderful example for others to follow.

Sherilyn Coney



Department of Conservation
Te Papa Atawhai

Phytophthora agathidicida in the Kaimai Mamaku Conservation Park: Frequently asked questions

What's happened at Kaimai Mamaku Conservation Park?

- We've had a provisional positive test for *phytophthora agathidicida* (PA), the fungus-type pathogen which can cause kauri dieback disease.
- The pathogen has been detected in a soil sample near a kauri hygiene station and on the track leading away from the station at Wharawhara, west of Katikati.
- DOC and iwi are concerned about the possible spread of the pathogen through the park.
- Iwi have placed a rāhui which DOC is supporting with a closure of the park. We will review the closures after 10 weeks (29 September 2023).
- The rāhui and closure will allow DOC time to undertake further investigation at this site and assess if additional track mitigation is needed to reduce the risk of spreading PA to other parts of the park.
- By restricting access, we are limiting any potential further spread of the pathogen that causes the disease, which is carried on as little as a pinhead of soil.

How was PA detected?

- DOC runs a national 4-year soil sampling focusing on testing around hygiene stations, tracks, and symptomatic trees to understand how well our mitigation is performing.
- This involves soil sampling to detect the presence of PA
- This is the first time the Wharawhara track has been sampled.

How accurate is the testing?

- DOC is carrying out verifications of the test results with the lab to have the greatest level of confidence that PA has been detected. We have these additional verification process in place anytime there is an unexpected result to rule out the possibility of cross-contamination or false positive results.

Why is DOC closing parts of the forest?

- There is currently no cure for Kauri Dieback Disease. Closing tracks allows DOC time to undertake further investigation at this site and assess if additional track mitigation is needed to reduce the risk of spreading PA to other parts of the park.

Department of Conservation Te Papa Atawhai
Tauranga office
253 Chadwick Road West, Greerton West, New Zealand
www.doc.govt.nz

- DOC Tauranga has closed kauri tracks in the past where mitigation costs were too high, or the track couldn't be re-routed to effectively protect significant kauri stands. Track closures were largely supported by the community.

How will the closures be enforced?

- DOC staff are stationed at the track entrances to support the closures and educate visitors on this issue.
- Tracks will be monitored for ongoing illegal visitor usage. People should understand that by accessing closed areas, they are putting our kauri at risk.
- The tracks and part of the park have been legally closed under the Conservation Act 1987. Any person who knowingly enters the closed area will be committing an offence against the Act and will be liable to an infringement fee of \$800.
- Signage has been placed at the closed track entrances and at junctions within the park to ensure visitors are aware of the closure.
- A rāhui has been placed over the closed areas as a temporary restriction of access for the protection of kauri. The rāhui has been placed under the authority of Mana Whenua of the affected land.

Why isn't DOC closing all kauri tracks?

- While we complete further validation steps of this recent finding, we are taking a staged and risk-based approach.
- DOC with Manau Whenua require time for further investigations to be completed to inform next steps on how to protect kauri in the whole Kaimai.
- There have been no other detections of PA elsewhere in the Kaimai Mamaku Conservation Park.

What has DOC done to protect kauri?

- The Department of Conservation has directly invested over \$2.5m on Kauri Protection in the Kaimai ranges since 2017.
- This has involved the improvement of track surfaces, the installation of hygiene stations, and support for advocacy, education, and ambassador programmes.
- In 2018 we also permanently closed six tracks to protect key stands of Kauri.
- DOC has also invested a further \$1.5m in Kauri Protection activity via its Jobs For Nature programmes in the Kaimai area.
- DOC has its own National Programme driving its kauri protection work and commits to kauri protection activities across the upper north island (Kaurilands).
- Kauri protection mahi that DOC delivers includes:

Department of Conservation Te Papa Atawhai
Tauranga office
253 Chadwick Road West, Greerton West, New Zealand
www.doc.govt.nz



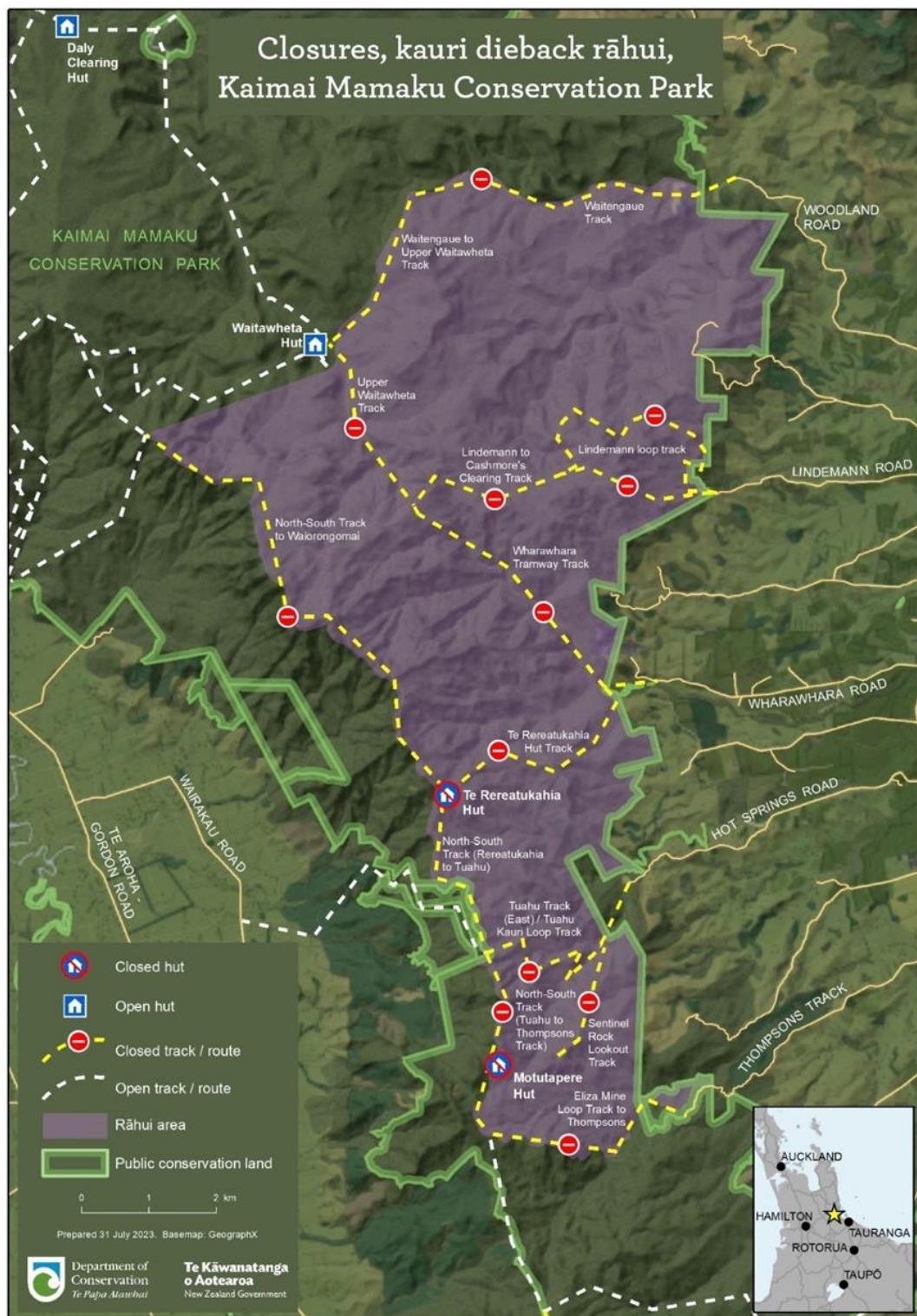
- Maintaining the track and hygiene station network on public conservation land.
 - Surveillance and soil testing to detect the pathogen.
 - Ambassadors in partnership with iwi/hapu groups at high value sites.
 - Vector control including pig and goat management.
- DOC works closely with Tiakina Kauri, MPI's national programme for kauri protection. We are responsible for managing kauri protection on public conservation land, which includes many of New Zealand's most significant kauri forests.
- Managing and reducing the impact of Kauri Dieback Disease is a high priority for the Department of Conservation.

Where do I find more info?

- For more information about Kauri and the disease affecting our taonga trees you can visit <https://www.kauriprotection.co.nz/>
- You can visit the DOC website [Kauri Dieback Disease: Pests and threats \(doc.govt.nz\)](#)
- Tiakina Kauri website also has a number of best practice advice, forest visitor guides and school resources. [Resources | Tiakina Kauri \(kauriprotection.co.nz\)](#)

2 August 2023

Department of Conservation *Te Papa Atawhai*
Tauranga office
253 Chadwick Road West, Greerton West, New Zealand
www.doc.govt.nz



Department of Conservation Te Papa Atawhai
 Tauranga office
 253 Chadwick Road West, Greerton West, New Zealand
www.doc.govt.nz

TRIP REPORTS

WAIATA SHORES WALK ON AUGUST 10TH



FRAMED BY THE LEADERS: the official ASC club photograph of the Waiata Waters, Manukau Harbour, Thursday walk.

From left: Sue Fitzpatrick (Tail End Charlie), [David Roberts](#), Theresa Kermode, Joe Scott Woods, Jim Frater, Don Baker, Bruce Derryhouse, Margaret Horsborough, Cathy Frith, Mike Frith, Marcia Roberts, Gillian Mellsop, Dieuweke Gers, Rosemary Wakeman, Pat Scott Woods, Clive Bolt, Helen Bolt, Gillian Trotman, Mary Metcalf, Jeanette Davidson, Brian Fitzpatrick (Leader).

Special thanks to leader Brian who complained that my posts on Facebook contained too many photos that did not show the faces of members. This grouping was arranged as a response to his complaint.

[Garth Barfoot](#).



More photos from the Waiata Shores walk on August 10th, 2023



WHANGAPARĀOA WALK ON AUGUST 24TH**Garth Barfoot**

14 h · 🌐

...

RUNNERS DO NOT HAVE THE RIGHT OF WAY : That is the advisory delivered at every Parkrun briefing before their Saturday morning runs in Auckland's parks. But the ASC Thursday walkers to Whangaparāoa were happy to wait behind leader Bruce Derryhouse whilst these Stanmore Bay pupils did their darndest. Their teacher, (hi-vis jacket) made a point of thanking us all for our patience. Not that it was necessary; it was a relief to have a respite from all those ups and down needed to see seemingly every beach and bay on the peninsula.



OKURA WALK ON JUNE 28TH



UPCOMING TRIPS

DALY'S CLEARING LOOP - KAIMAI FOREST PARK 7.5KM

Sunday September 3rd

Meet at end of Franklin Road at 10am

Follow Dean Track to Mangakino Pack Track to Daly's Clearing Hut for lunch. Return via Waitawheta Valley Track to carpark. About 4 hrs walking. Suitable for children so should be within our capabilities. I have not done this track so in Ron Bennett's vernacular it is known as an "Exploratory Walk".

This tramp agains requires favourable weather. If the forecast is adverse, I have a Plan B.

Email don.baker@xtra.co.nz or Ph 0274773834

THURSDAY WALKS - TWO VOLCANOES WALK

Thursday - September 14th

Two volcanoes, Maungakiekie and Mount St.John - Titikopuke and for the energetic there is the option to add a third volcano Mt.Hobon - Ohinerau.

Gather at 10:15 in the first car park on the right hand side entering Cornwall Park from Greenlane West. Please note is now not possible to drive through the park from Manukau Road to the Greenlane West side.

There are toilets by the car park.

Leaders: Mary M. & Karen Y. marymetcalf@xtra.co.nz, karenay@xtra.co.nz

THURSDAY WALKS - SHAKESPEAR REGIONAL PARK

Thursday - September 28th

Details to be advised closer to the time.

Leader. Colleen Brewer. candwbrewer@hotmail.com

CHILDREN'S PRACTICAL BUSHCRAFT - WAITAKERE HUT

Weekend - September 30th - October 1st

Its time for another of our very popular ASC Children's Practical Bushcraft Weekends at our own Waitakere club hut..

Timing - 9:30 am Saturday to about 2 pm Sunday. Overnight stay at the ASC Waitakere Hut. Pay only for the accommodation. Suitable for 7 – 11 year olds, though all ages welcome.

Must be accompanied by a parent or guardian. Please email Sue Grant on kiwiguide@xtra.co.nz to book and for more information.

WOMEN'S OVERNIGHTER - PARARAH VALLEY CAMPING **VENUE CHANGE TO HUNUA (PIGGOTTS)**

Weekend - September 29th - October 1st

**** Change of destination***

Due to track closures and tidal timings I unfortunately need to change this event to the Hunua Ranges Piggott Campground. Please let me know if you are still interested and I will book the campground. Once confirmed you can cancel your booking with Auckland Council for Parahaha valley. Piggott's campground is nestled in the Hunua ranges park, near streams, bush and waterfalls. The campground is still only accessible on foot by approximately 4km from the carpark. This event is for Women, Non-binary and Trans folx . Adult only, no kids. Skill level – suitable for all levels of fitness.

<https://www.aucklandcouncil.govt.nz/.../accommodation...>

When : Saturday the 30th September, 2023. Contact me if you would like to meet and walk in together

Where: Piggott's campsite, Hunua

Cost : \$9 per night

If you would like to register contact the trip organiser Claire Caiger via email :

clairecaiger@gmail.com or mobile 02108699308

Once you register Claire will send a link to a google document and add you to a whatsapp group for planning and connecting to others on the trip.

I will share a suggested packing/equipment list once you register also.

ALPINE WEEKEND - CENTRAL PLATEAU

Weekend - October 7th & 8th

A weekend for those who have had previous experience with ice axe & crampons. Could either be a winter Tongariro Crossing or a trip up to the plateau of Ruapehu depending on popularity & conditions, contact Mark to share your idea's. Trip will only go ahead if the weather is reasonable .

Leader Mark Roberts mark2005roberts@yahoo.co.nz

CHANGE OF DATE

MT EDEN TO EDEN TCE CIRCUIT WITH A FEW INTERESTING VISITS ALONG THE WAY.

NOW Thursday October 12th

This is a walk through an historic part of Auckland passing by the homes of both the rich and not so rich, of which some are quite old and some quite modern.

We will do a complete circuit around the base of Mt Eden taking in the changing face of Auckland – so please take your time to enjoy.

Arrangements have been made to visit the City Rail Link Visitors Centre where one of their ambassadors will give a talk on the construction of the rail link and answer any questions you might have concerning the project. He will then lead a rim walk around the the Mt Eden project and after that we will walk back to the foot of Mt Eden for lunch. After lunch we will complete our circuit around Mt Eden and visit by arrangement the gardens around The Pines Apartments (these gardens are Private Property and not open to the public).

Leaders:- Warren & Jocelyn Whyte

WAITAKERE WOODBURNER CELEBRATION

Sunday 29th October, 2023

Join other members of the club at the Waitakere Hut for lunch and unveiling of the new woodturner. More details next month.

COROMANDEL FAMILY CAMPING WEEKEND - WENTWORTH VALLEY WHANGAMATA

November 17th - November 19th, 2023

Family friendly camping weekend. Bush, waterfalls, walking tracks, mines, eels, glow worms. Powered and non powered sites available.

Please contact Juliet to register: 027 201 2816 or Jules.reeves@outlook.com

CROSBIES HUT & CAMPSITE FAMILY WEEKEND -

December 9th & 10th, 2023

Family tramping trip for older children (7+) to Crosbie Hut in the Coromandel region. Following the Karaka (5 Hr/12.9km) & Waiomu (4hr /9.3.5km) tracks. Book a campsite or bunk in the hut online with Doc , link below. We will meet at the Thames road end (Collarbone Road) Saturday morning and walk out early afternoon Sunday to Waiomu. Depending on numbers we may car shuffle but the leader has already arranged a one car pick up from Waiomu.

[New Zealand - DOC Booking Service - Search](#)

Leader Mark Roberts mark2005roberts@yahoo.co.nz

SUMMER CAMP

December 26th 2023 - January 3rd 2024

Complete details on earlier notice on page 8 and 9.

To book a spot and for more information including the exact address contact Peter Jemmett:
pmc.jemmett@xtra.co.nz

NGATUHOA LODGE WEEKEND - KAIMAIS

Friday 1st to Sunday 3rd March 2024

Surrounded by bush clad hills in the Kaimais, our club weekend at this lodge includes use of a mini confidence course, a flying fox, flat water kayaking & tubing in the stream. Further afield are walks to waterfalls , mountain bikes can be useful for access to tracks uphill from the lodge.

Accommodation costs are \$50 per person for the weekend. Contact Eric to book, 50% deposit payable to confirm your place. Last summer this trip booked out very quickly, so please get in early to avoid disappointment. Members only weekend.

Bookings to Eric Horn: kerianderic@alpinesport.org.nz